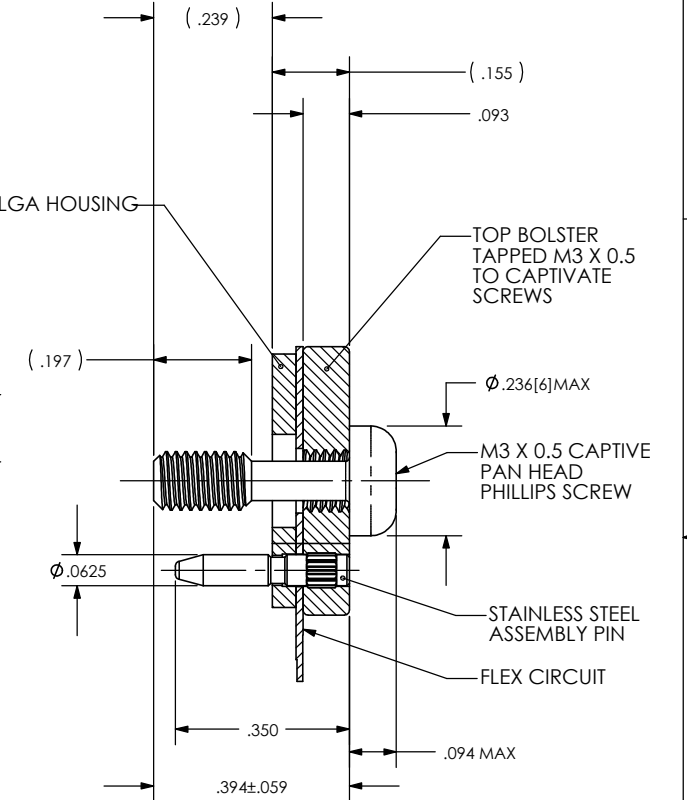
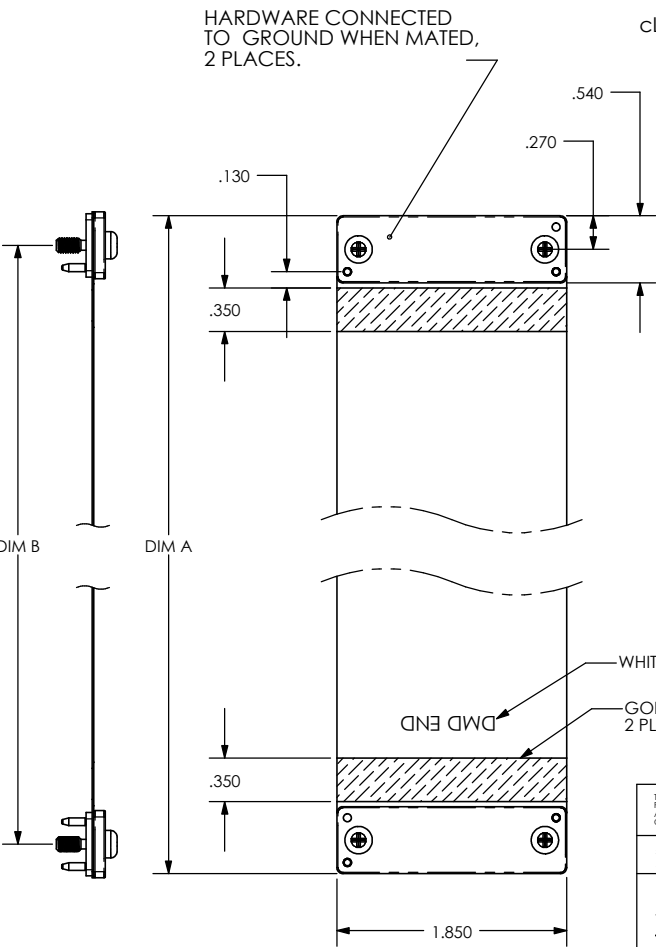
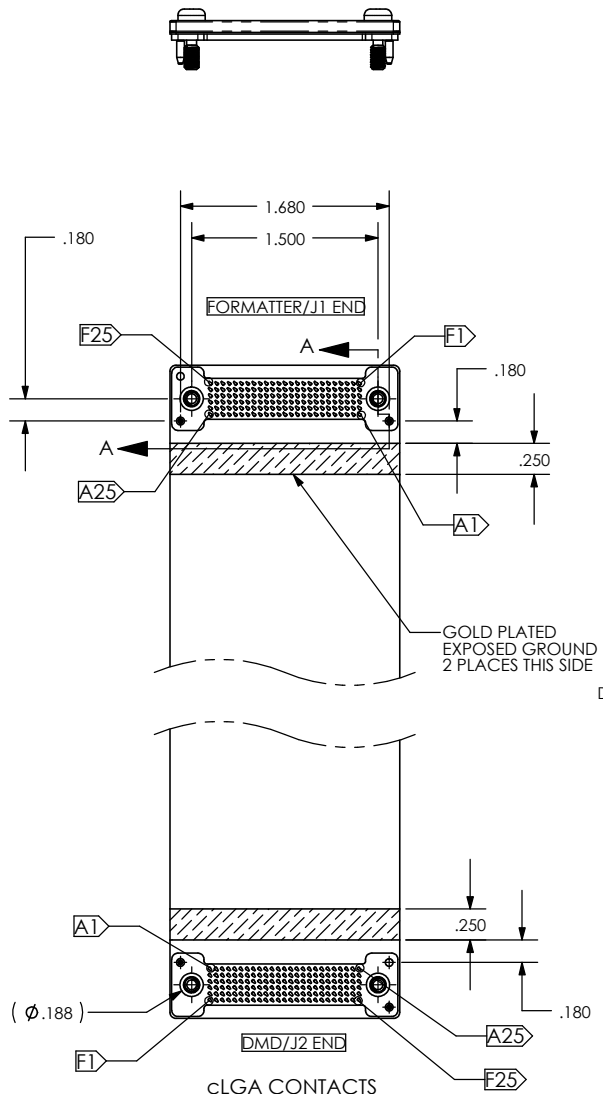


**150 POSITION cSTACK FLEX ASSEMBLY:  
TWO 8397-002 REQUIRED PER FLEX ASSEMBLY (8394-00X)**

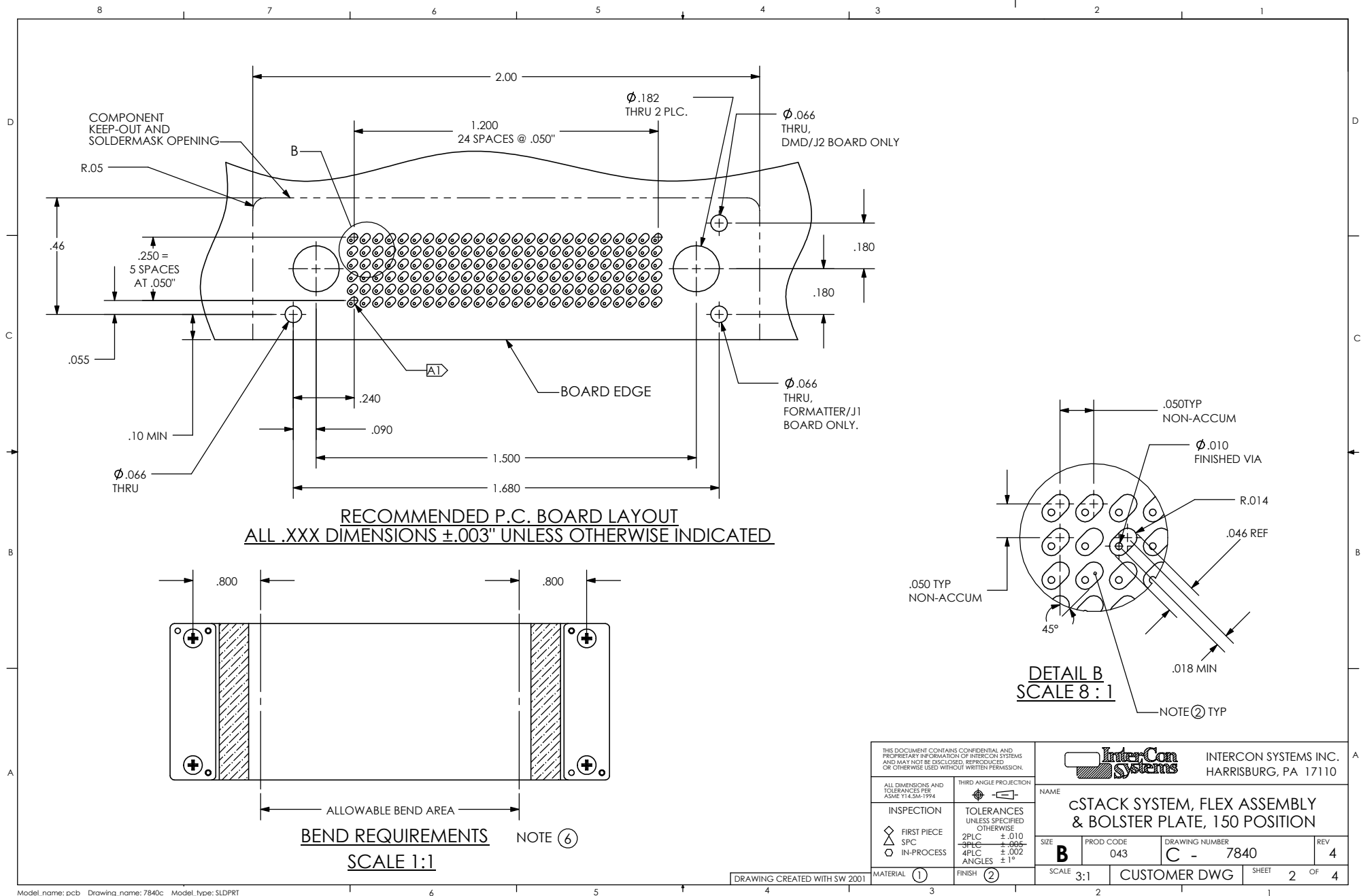
PART NUMBER	DIM A	DIM B
8394-001	5.20	4.300
8394-002	12.20	11.300

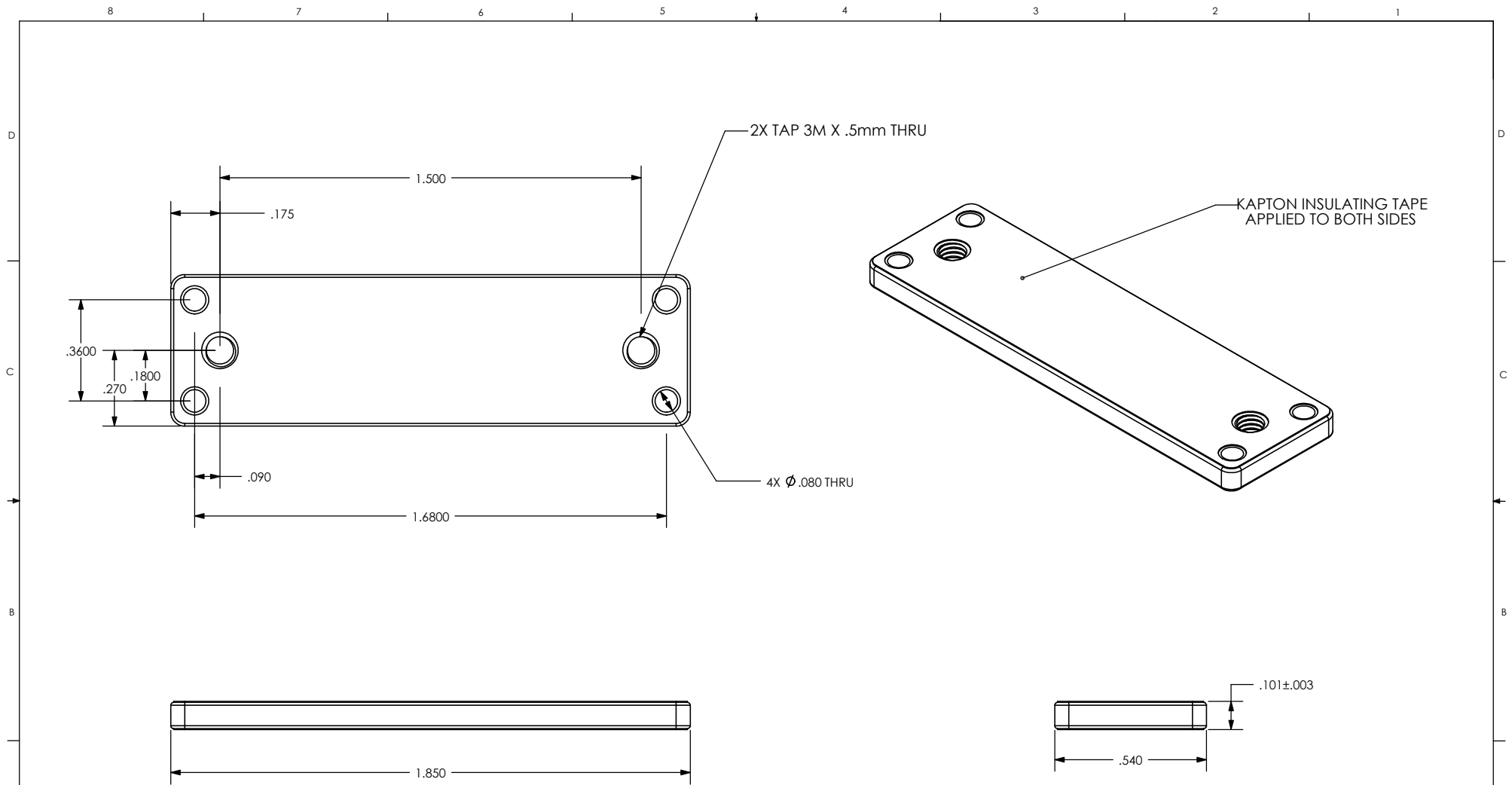
REVISIONS			
REV	DESCRIPTION	DATE	DWN
4	EC7908 - ADDED NOTE 7	01-18-05	LBA




**SECTION A-A  
SCALE 4 : 1**

<small>THIS DOCUMENT CONTAINS CONFIDENTIAL AND PROPRIETARY INFORMATION OF INTERCON SYSTEMS AND MAY NOT BE DISCLOSED, REPRODUCED OR OTHERWISE USED WITHOUT WRITTEN PERMISSION</small>				<b>INTERCON SYSTEMS INC.</b> HARRISBURG, PA 17110	
<small>ALL DIMENSIONS AND TOLERANCES PER ASME Y14.5M-1994</small>		<small>THIRD ANGLE PROJECTION</small>		NAME <b>cSTACK SYSTEM, FLEX ASSEMBLY &amp; BOLSTER PLATE, 150 POSITION</b>	
INSPECTION FIRST PIECE SPC. IN-PROCESS		TOLERANCES UNLESS SPECIFIED OTHERWISE 2PLC ±.010 3PLC ±.005 4PLC ±.002 ANGLES ±1°		SIZE <b>B</b> PROD CODE 043 DRAWING NUMBER <b>C - 7840</b> REV <b>4</b>	
MATERIAL ① FINISH ②		SCALE 1:1 CUSTOMER DWG		SHEET 1 OF 4	





**BOTTOM BOLSTER PLATE ASSEMBLY:**  
**TWO 8397-002 REQUIRED PER FLEX ASSEMBLY (8394-00X)**

THIS DOCUMENT CONTAINS CONFIDENTIAL AND PROPRIETARY INFORMATION OF INTERCON SYSTEMS AND MAY NOT BE DISCLOSED, REPRODUCED OR OTHERWISE USED WITHOUT WRITTEN PERMISSION.		 <b>INTERCON SYSTEMS INC.</b> HARRISBURG, PA 17110	
ALL DIMENSIONS AND TOLERANCES PER ASME Y14.5M-1994	THIRD ANGLE PROJECTION	NAME cSTACK SYSTEM, FLEX ASSEMBLY & BOLSTER PLATE, 150 POSITION	
INSPECTION	TOLERANCES UNLESS SPECIFIED OTHERWISE	SIZE <b>B</b>	PROD CODE 043
FIRST PIECE SPC IN-PROCESS	2PLC ±.010 3PLC ±.005 4PLC ±.002 ANGLES ±1°	DRAWING NUMBER C - 7840	REV 4
MATERIAL ①	FINISH ②	SCALE 1:1	CUSTOMER DWG SHEET 3 OF 4

